



**eKO WOOD®**  
*A stylish way to live...*

# WOODEN ENGINEERED FLOORING

One product  
combining all the benefits

---



## EKOWOOD - GLOBAL MANUFACTURER

Wood is one of the most indigenous raw materials, which is why wooden floors can greatly enliven any interior and give it a genuine natural style. Ekowood produces products that retain their natural beauty and are constantly being improved through research and innovation. This creates new modern flooring options for any space. With years of experience and know-how, Ekowood has the expertise and authority in the production of multi-layer wooden flooring. When working with natural wood, it is very important to take into account its susceptibility to adsorption or desorption. Wood always tries to reach a so-called moisture equilibrium according to the exposed environment. Thanks to our patented Cross-Grain technology, Ekowood floors are 70% more dimensionally stable than other common wooden floors. Each of the three layers that make up an Ekowood floor is placed crosswise, which adds strength to the integrity of the floor and reduces the natural processes of wood shrinkage and expansion. Therefore, the use of this technology results in stronger and more stable floors.

### EXCELLENT PRETREATMENT, SURFACE FINISH

Ekowood engineered oak flooring can be purchased with a pre-finished surface, which only needs a final surface finish after the installation.

Because of this service, Ekowood is one of the few manufacturers that can satisfy customers with individual requirements for the final shade of the floor. The finishing of oak can be very varied and if you do not find your distinctive colour in the standard EKOWOOD offer, you can proceed to an individual selection of shades that suit your ideas. This usually requires a personal meeting with the EKOWOOD seller, who will offer you an individual customisation of the final look using natural oil and wax coatings from OSMO.

The floors with the final finish are treated with OSMO Polyx Oil. OSMO is a brand that ensures the perfect appearance and quality of your wooden surfaces thanks to its unique formula based on pure, natural ingredients and thanks to its quality workmanship.





The green colour in our logo shows that Ekowood is an environment-friendly product and that our wood is obtained only from legally managed forest resources.

We are dedicated to produce the highest quality products and to support sustainable management of our forests. Ekowood is proud to be involved in the protection of the Earth's environment, as it is our belief and obligation to keep the Earth as natural and clean as possible, as a legacy for the future. This statement can be seen from the activities carried out by Ekowood and the companies within the Group.

Ekowood is actively involved in sustainable forestry through parent company TSH Resources Berhad. In 1997, TSH was awarded with a 100-year timber concession to carry out conservation and plantation on 300,000 acres of forestry land in Ulu Tungud, Sabah, also known as Forest Management Unit 4 (FMU4). Out of these 300,000 acres, 30% of the forest land has been designated for conservation purposes and a significant land area has been set aside for a 13-year forest plantation development program to plant a total of 5.5 million trees.

Apart from sustainable forestry, TSH is also involved in generating green energy in the form of biomass and biogas power. Both biomass and biogas are environment-friendly and are qualified as a Clean Development Mechanism (CDM) project under Kyoto protocol.

Ekowood is extremely committed to the world environment. Consumers interested in obtaining products sensitive to the environment should be comfortable and well assured with Ekowood products.





## LOCATION AND PRODUCTION





**HEALTHY KNOTS:** allowed in maximum size of 20 mm

**DEAD KNOTS:** allowed in maximum size of 20 mm puttied, 1 piece on the face side

**SAPWOOD:** allowed on maximum of 1/3 of the surface

**COLOUR:** balanced harmony is characteristic for this grading

**RESIN POCKETS:** not allowed

**INSECT TRAILS:** not allowed

**END SPLITS:** not allowed

## GRADING UNICA



**HEALTHY KNOTS:** allowed in size approx. 30 mm

**DEAD KNOTS:** allowed in maximum size of 30 mm puttied, 3 pcs on the face side

**SAPWOOD:** allowed in a max. of 1/3 of the surface

**COLOUR:** colour differences and contrast are characteristic for this grading

**RESIN POCKETS:** allowed in max. length of 50 mm and in max. width of 3 mm

**HOLES DONE BY INSECTS:** 2 mm; allowed max. of 2 pieces per bundle

**END SPLITS:** not allowed

## GRADING CLASSIC



**HEALTHY KNOTS:** allowed without limitation

**DEAD KNOTS:** allowed in maximum size of 120 mm puttied without limitation

**SAPWOOD:** allowed up to a maximum of 50% of the width of the board

**COLOUR:** stronger colour differences and contrast are typical for this grading

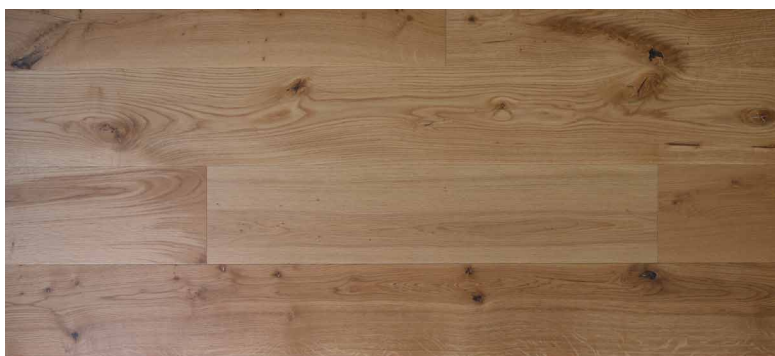
**RESIN POCKETS:** allowed without limitation

**SPLITS IN THE MIDDLE:** allowed with max. width of 1.5 mm and max. length of 150 mm, puttied

**HOLES DONE BY INSECTS:** allowed

**END SPLITS:** allowed and filled with a brown putty

## GRADING RUSTICAL





# EUROPEAN WOOD COLLECTION





# OAK, ASH, WALNUT



Our calm and colour-balanced hardwood floors add effortless elegance to any room.

## OAK

Sapwood is lighter than heartwood, which is also lighter yellow-brown, usually straight-fibred but often irregularly or cross-fibred. It has a characteristic silvery pattern on the radial section caused by the broad rays and has a slightly rough texture. Density after drying:  $720\text{--}750\text{ kg/m}^3$ .

## ASH

Northern white ash harvested in North America offers an interesting wood structure without knots. Durable and dimensionally stable wood. Ash wood has an exceptional durability, incomparable stability and a beautiful rich colour. Wood density after drying: approx.  $660\text{ kg/m}^3$ .

## AMERICAN WALNUT

American walnut is most widespread in the USA and Canada. It is popular because of its interesting colour and pattern. In addition, it has excellent dimensional stability. American walnut is known for its darker brown heartwood, which occasionally shows a purple tinge. The dark brown colour of the heartwood contrasts sharply with the much lighter sapwood, which is usually yellow-grey to almost white. Density of wood after drying: approx.  $680\text{ kg/m}^3$

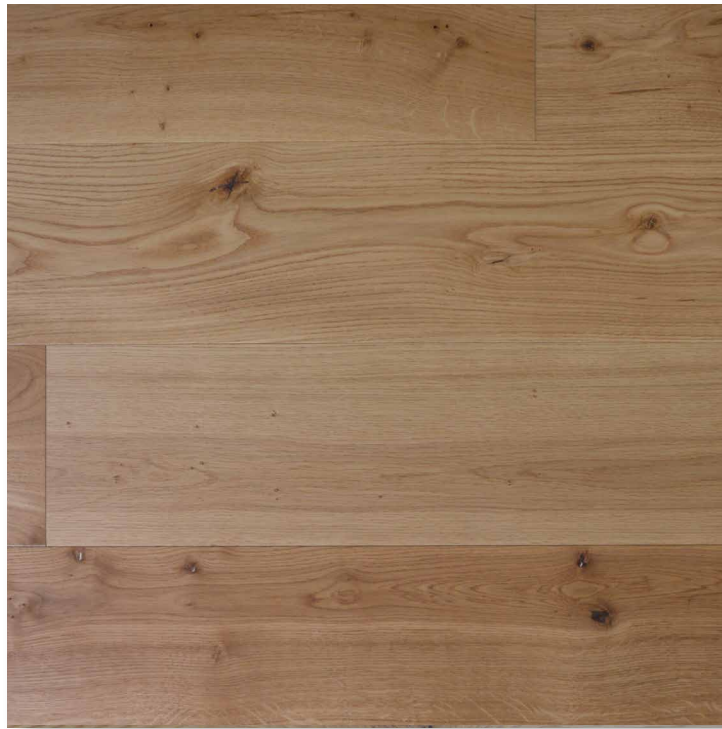




# EUROPEAN OAK



## 1-STRIP TRANSPARENT



**Surface treatment:**  
OSMO oil, clear matt

**Dimensions (mm):**  
13,5 x 192 x 1820/2150

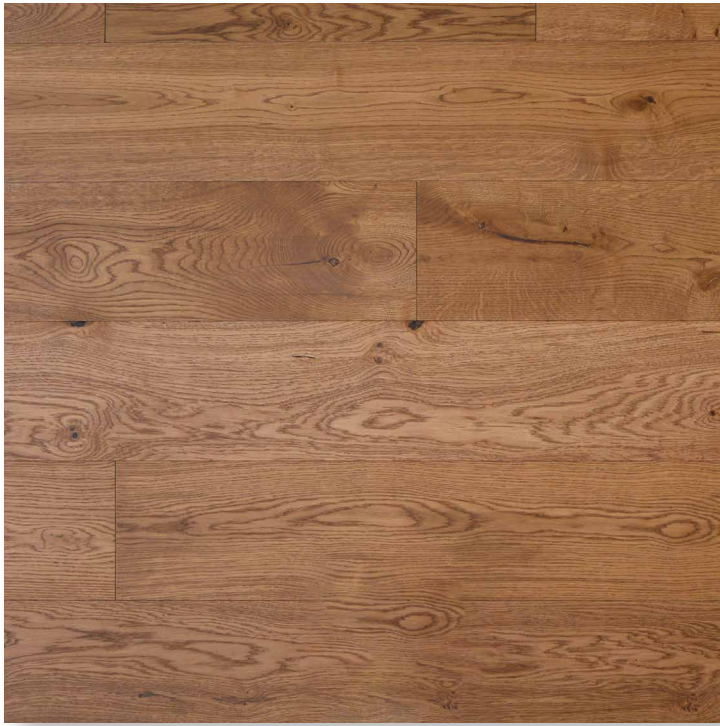
**Design:**  
slightly shrunken longitudinal and transverse edges, 4V,  
brushed surface





# RUSTICAL

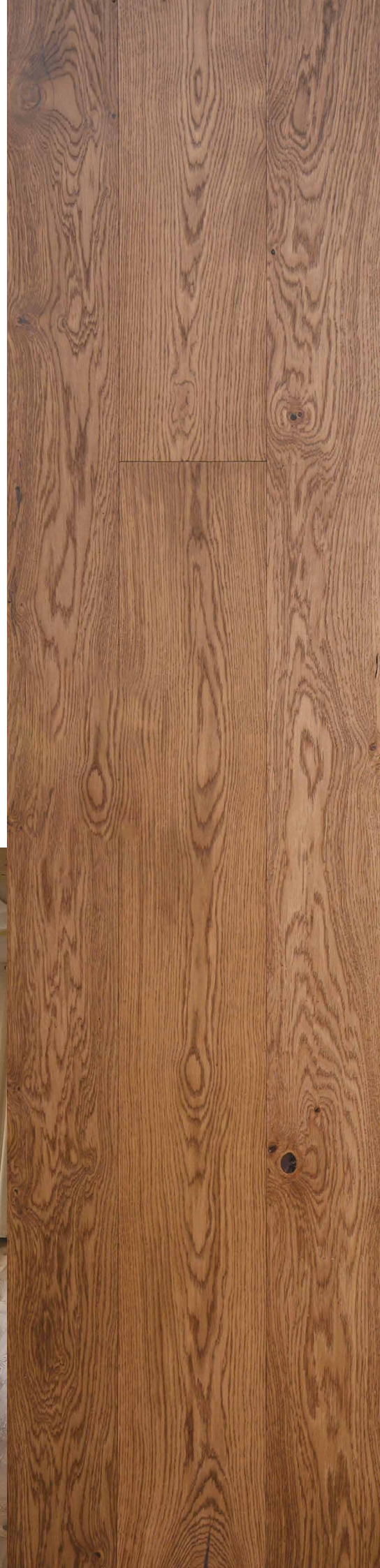
## 1-STRIP LIGHTLY SMOKED



**Surface treatment:**  
OSMO oil, clear matt

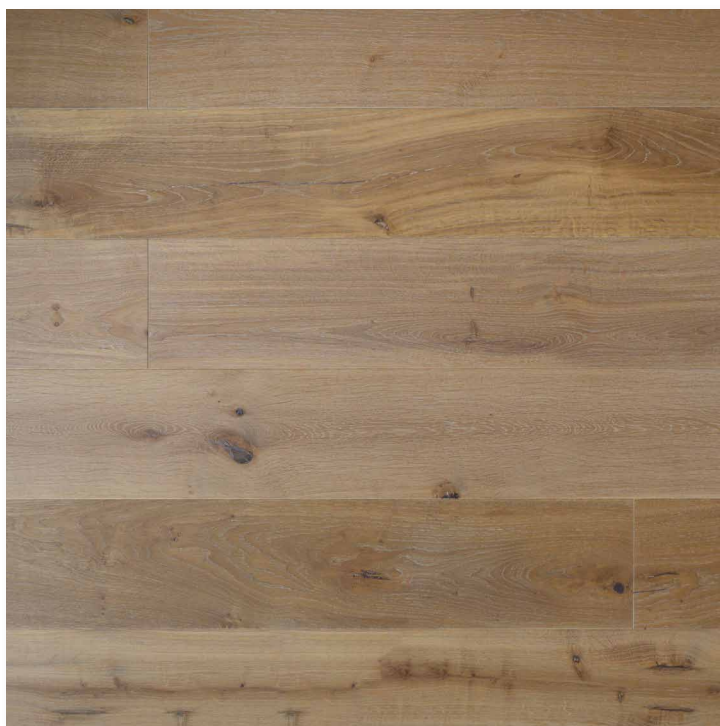
**Dimensions (mm):**  
13,5 x 192 x 1820/2150

**Design:**  
slightly shrunken longitudinal and transverse edges, 4V,  
surface brushed





## 1-STRIP LIGHTLY SMOKED WHITE



**Surface treatment:**  
OSMO oil, white

**Dimensions (mm):**  
13,5 x 192 x 1820/2150

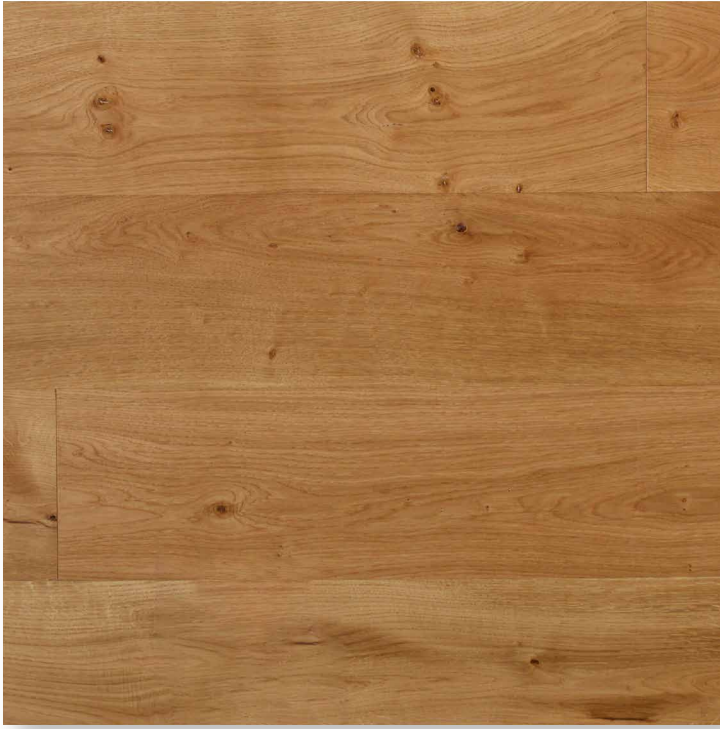
**Design:**  
slightly shrunken longitudinal and transverse edges, 4V,  
surface brushed





# CLASSIC

## 1-STRIP TRANSPARENT



**Surface treatment:**  
OSMO oil, clear matt

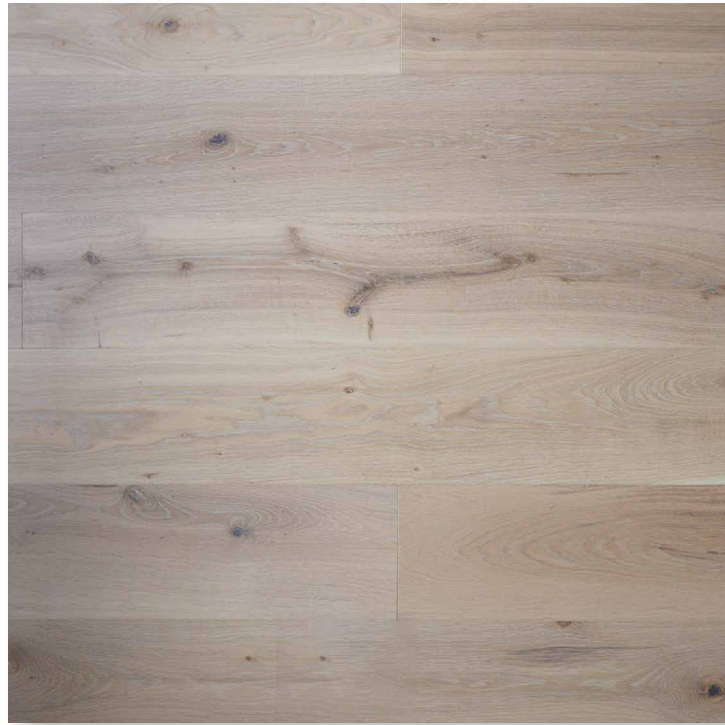
**Dimensions (mm):**  
13,5 x 192 x 1820/2150

**Design:**  
slightly shrunken longitudinal and transverse edges, 4V,  
surface brushed





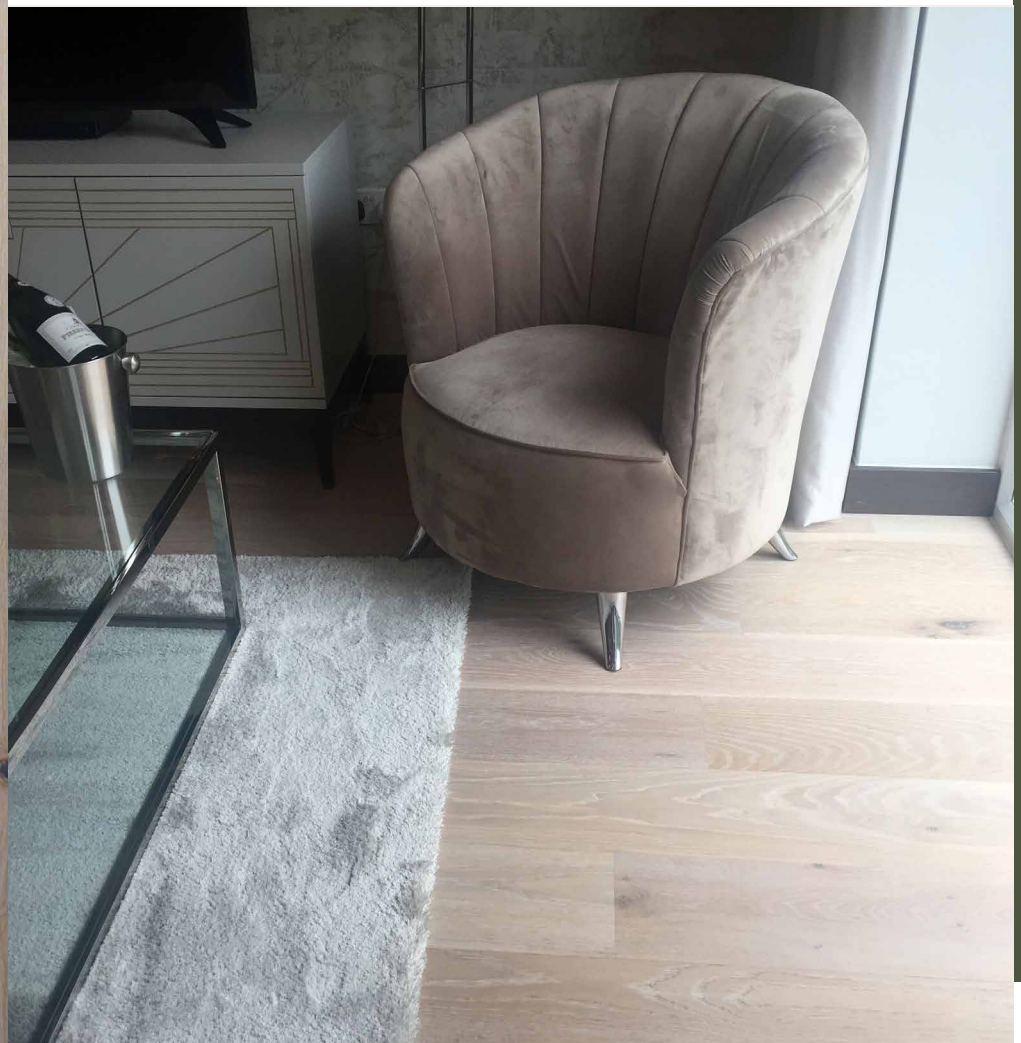
## 1-STRIP WHITE



**Surface treatment:**  
OSMO oil, white

**Dimensions (mm):**  
13,5 x 192 x 1820/2150

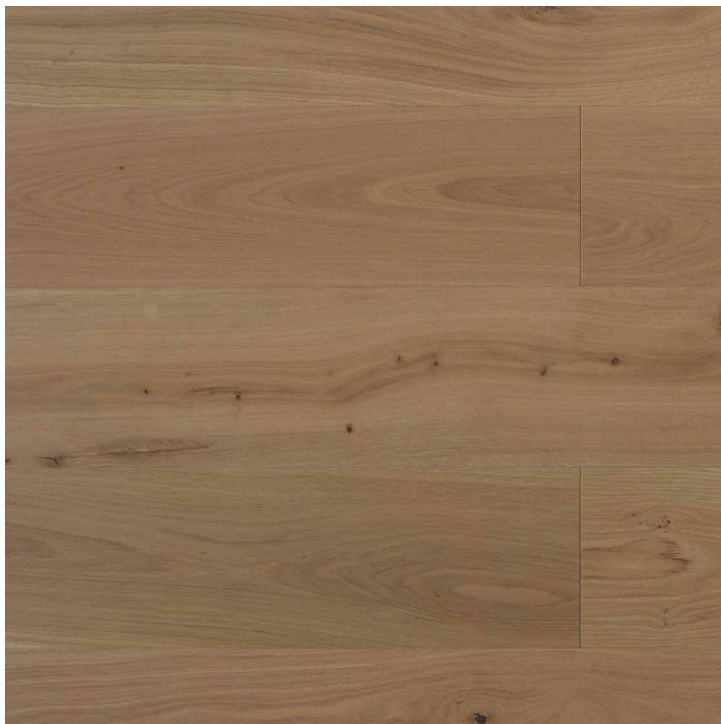
**Design:**  
slightly shrunken longitudinal and transverse edges, 4V,  
surface brushed





# CLASSIC

## 1-STRIP NATUREL



**Surface treatment:**  
OSMO oil, naturel

**Dimensions (mm):**  
13,5 x 192 x 1820/2150

**Design:**  
slightly shrunken longitudinal and transverse edges, 4V,  
surface brushed





## 1-STRIP GREY



**Surface treatment:**  
OSMO oil, grey

**Dimensions (mm):**  
13,5 x 185/192 x 1820/2150

**Design:**  
slightly shrunken longitudinal edges, 2V\*  
slightly shrunken longitudinal and transverse edges, 4V,  
surface brushed

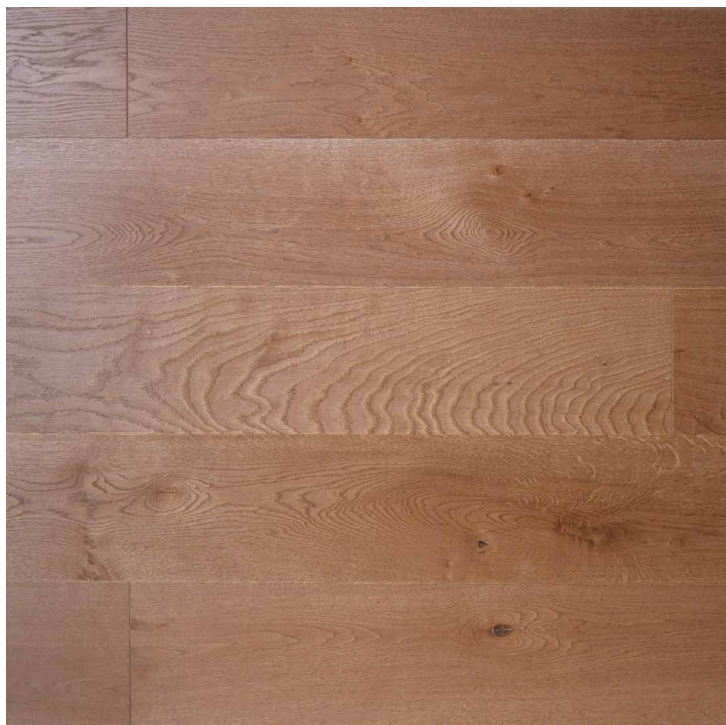
\*available until running out of stock





# CLASSIC

## 1-STRIP EBONY

**Surface treatment:**

OSMO oil, ebony

**Dimensions (mm):**

13,5 x 185/192 x 1820/2130

**Design:**

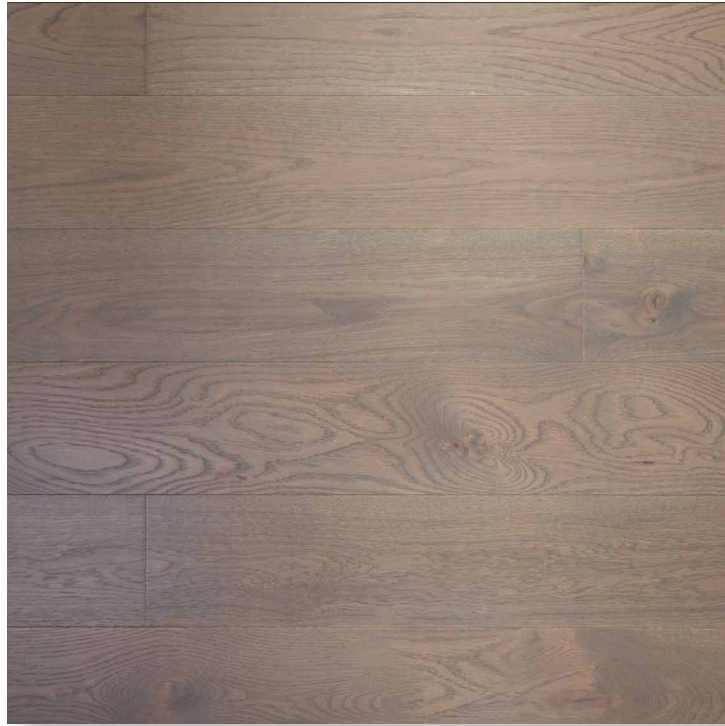
slightly shrunken longitudinal edges, 2V\*  
slightly shrunken longitudinal and transverse edges, 4V,  
surface brushed

\*available until running out of stock





## 1-STRIP GRAPHITE

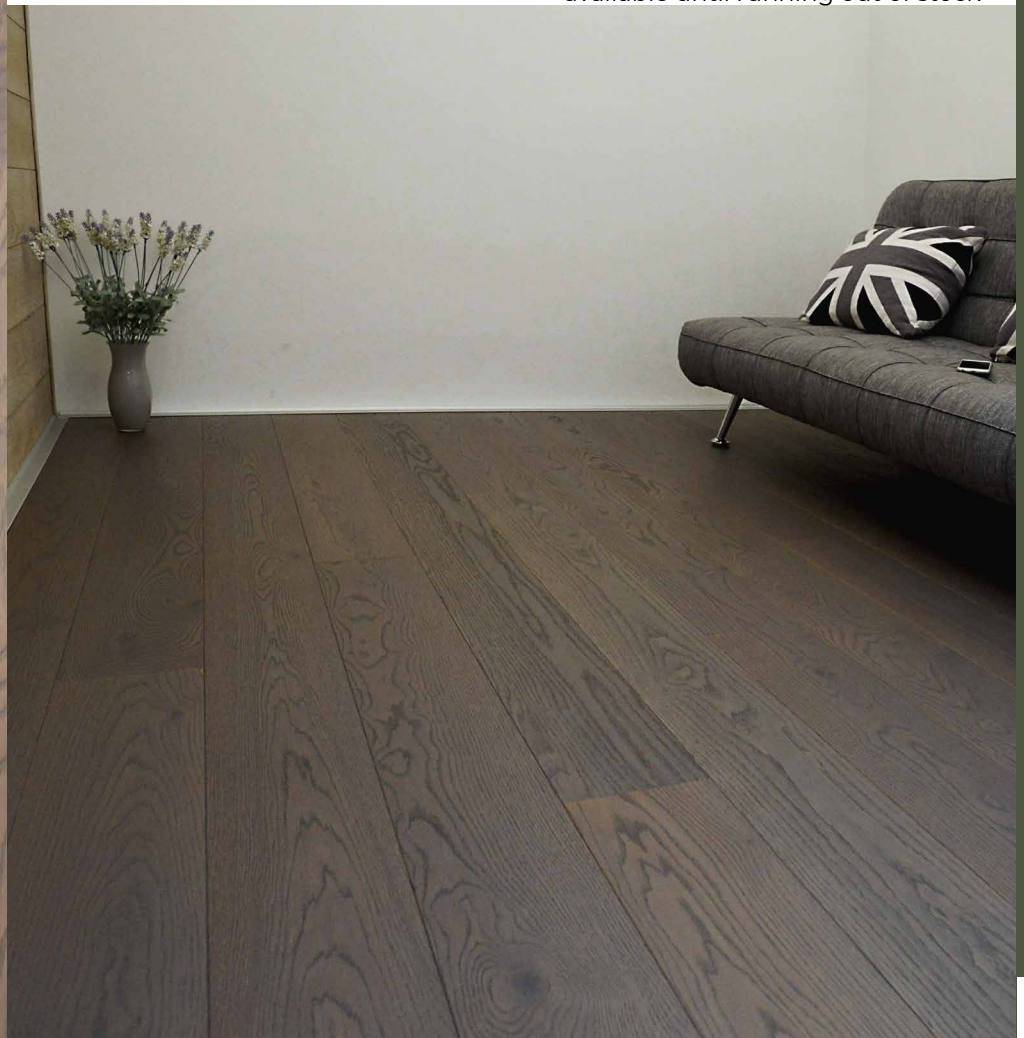


**Surface treatment:**  
OSMO oil, graphite

**Dimensions (mm):**  
13,5 x 185/192 x 1820/2150

**Design:**  
slightly shrunken longitudinal edges, 2V\*  
slightly shrunken longitudinal and transverse edges, 4V,  
surface brushed

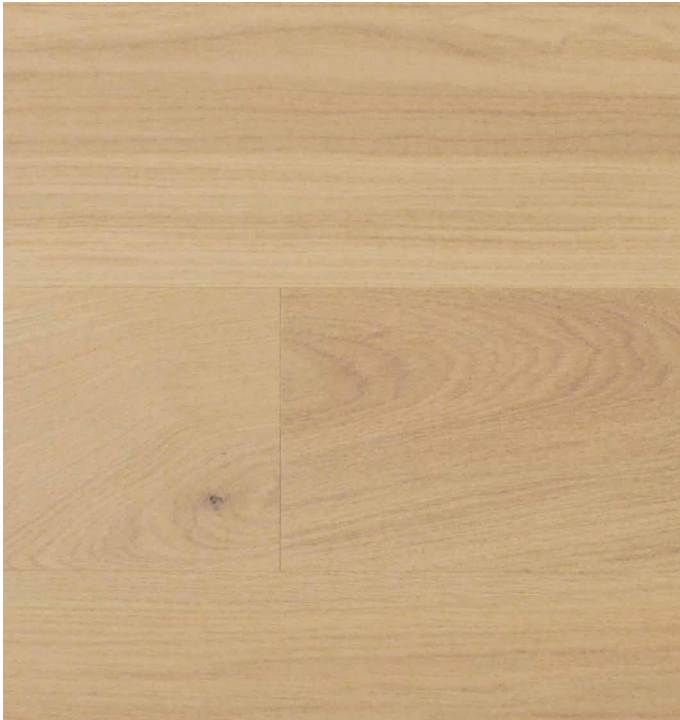
\*available until running out of stock





# CLASSIC

## 1-STRIP WITHOUT SURFACE TREATMENT

**Surface treatment:**

without surface treatment

Recommended colours for individual optics:

Osmo Polyx-Oil Tints, Osmo Oil Stain,

Osmo 2K Wood Oil.

**Dimensions (mm):**

13,5 x 192 x 1820/2150

**Design:**

slightly shrunken longitudinal and transverse edges, 4V,  
surface brushed





# SELECTION OF SHADES

## OIL STAIN



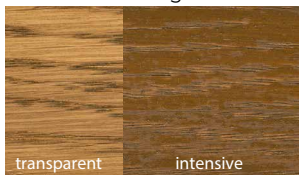
3590 black



3564 tobacco



3543 cognac



3541 havanna



3516 jatoba



3518 light grey



3514 graphite



3512 medium grey



3501 white



3519 natural

## POLYX-OIL TINTS



3040 white transparent



3067 light grey transparent



3071 honey transparent



3072 amber transparent



3073 terra transparent



3074 graphite transparent



3075 black transparent



3091 silver transparent



3092 gold transparent

## 2K WOOD OIL



6100 clear matt



6164 tobacco transparent



6111 white transparent



6190 black transparent



6112 silver grey transparent



6114 graphite transparent



6116 cherry transparent



6118 light grey transparent



6119 natural transparent



6141 havanna transparent



6143 cognac transparent





ASH



1-STRIP TRANSPARENT



3-STRIP TRANSPARENT



**Surface treatment:**  
OSMO oil

**Dimensions (mm):**  
13,5 x 136 x 1820/2130

**Design:**  
without longitudinal phases,  
surface sanded, smooth

**Surface treatment:**  
OSMO oil

**Dimensions (mm):**  
13,5 x 195 x 2200

**Design:**  
without longitudinal phases,  
surface sanded, smooth







# AMERICAN WALNUT



## 1-STRIP TRANSPARENT



**Surface treatment:**  
OSMO oil

**Dimensions (mm):**  
13,5 x 136 x 1820/2130

**Design:**  
without longitudinal phases,  
surface sanded, smooth

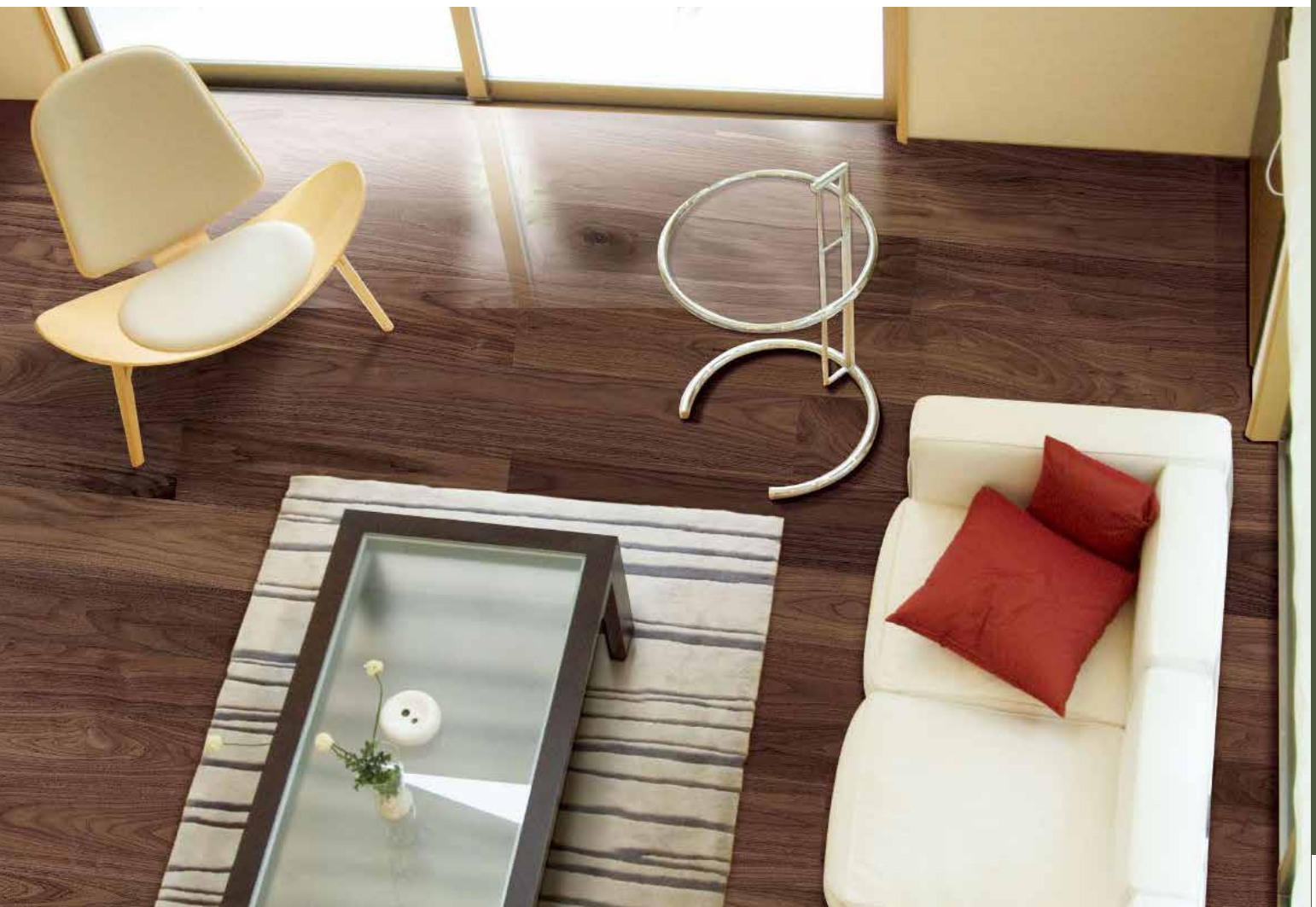
## 3-STRIP TRANSPARENT



**Surface treatment:**  
OSMO oil

**Dimensions (mm):**  
13,5 x 195 x 2200

**Design:**  
without longitudinal phases,  
surface sanded, smooth





# EXOTIC WOODEN COLLECTION





# DOUSSIE, MERBAU, TEAK

## DOUSSIE

Doussie is hard, durable, resilient and decorative wood. It has a light brown, orange-brown to reddish-brown color that tends to develop over time and darkens. The wood has a natural gloss and medium to coarse texture. Density of wood after drying: approx. 800 kg/m<sup>3</sup>.

## MERBAU

Merbau is commonly found in lowland coastal forests of Indian-Malaysian region in the Southeast Asia. Merbau has orange-brown core colour that gradually darkens from brownish grey to a darker reddish brown. The sapwood, with its light yellow colour, is clearly distinguishable from the heartwood. The wood has a coarser texture, usually straight fibred. Density of the wood after drying: approx. 800 kg/m<sup>3</sup>.

## TEAK

Teak comes from Burma and also grows in India, Thailand, Indonesia and Java. Authentic teak has narrow, light yellow-brown sapwood and dark golden-brown heartwood that darkens to medium or dark brown due to air conditions. Teak has a predominantly straight fibre. Density of the wood after drying: approx. 680 kg/m<sup>3</sup>.



## DOUSSIE 1-STRIP TRANSPARENT



**Surface treatment:**  
OSMO oil

**Dimensions (mm):**  
13,5 x 136 x 1820/2130

**Design:**  
without longitudinal phases,  
surface sanded, smooth

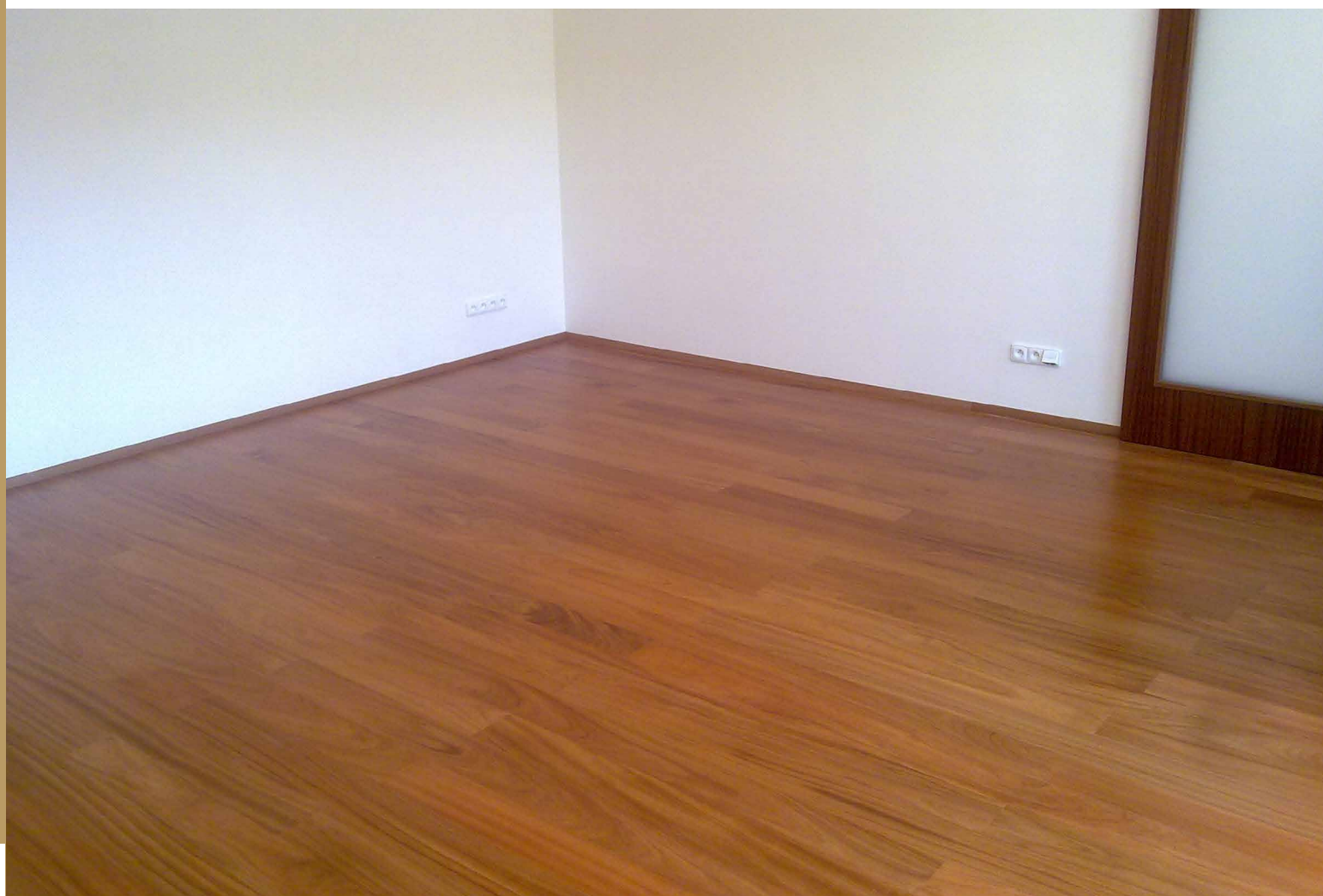
## DOUSSIE 3-STRIP TRANSPARENT



**Surface treatment:**  
OSMO oil

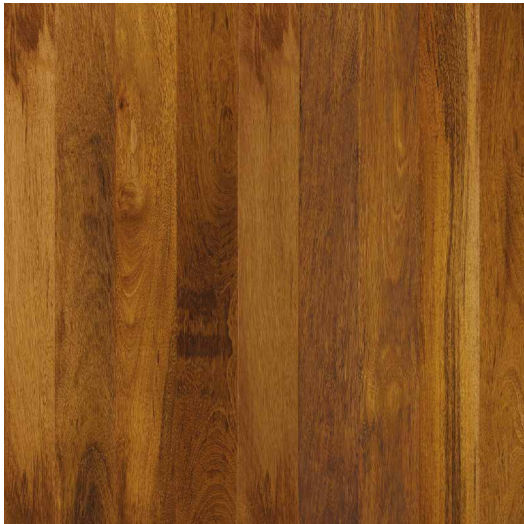
**Dimensions (mm):**  
13,5 x 195 x 2200

**Design:**  
without longitudinal phases,  
surface sanded, smooth





MERBAU 1-STRIP TRANSPARENT



**Surface treatment:**  
OSMO oil

**Dimensions (mm):**  
13,5 x 136 x 1820/2130

**Design:**  
without longitudinal phases,  
surface sanded, smooth

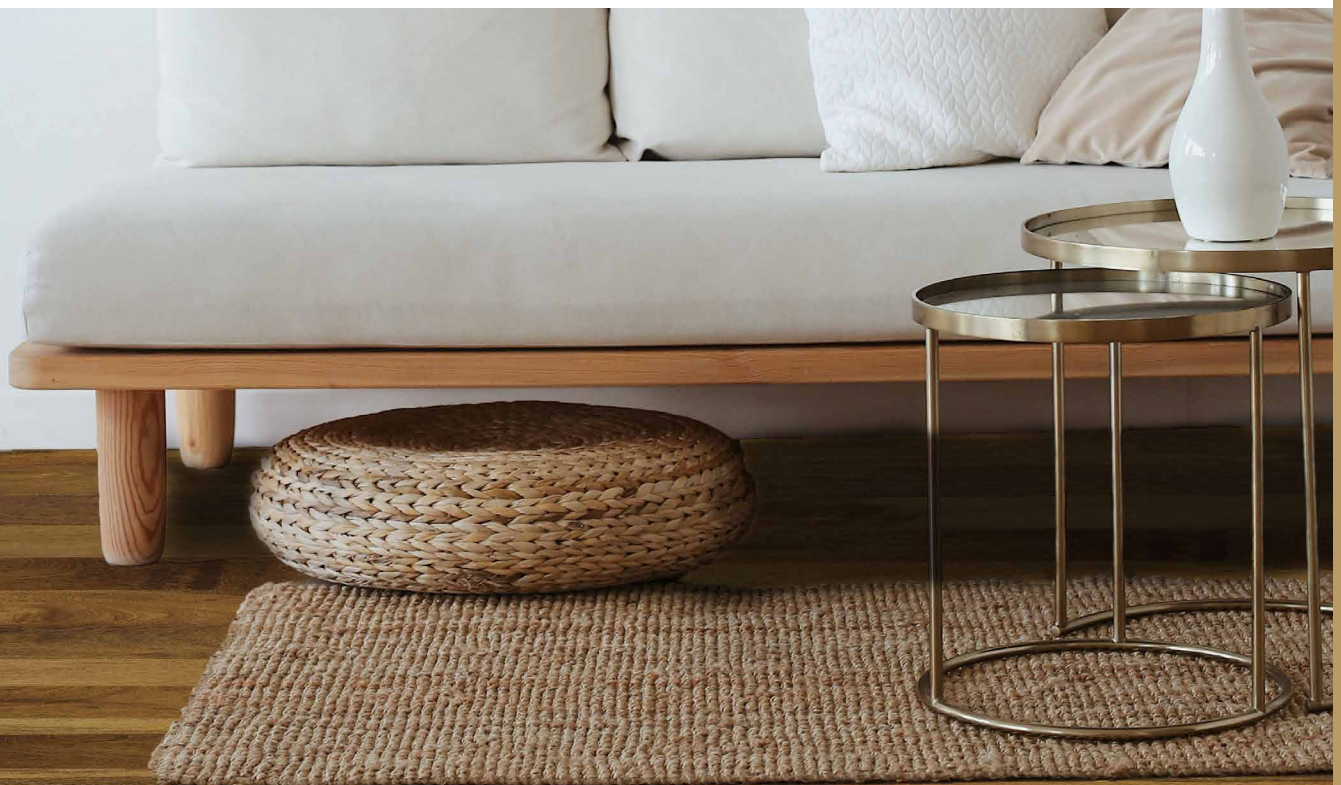
MERBAU 3-STRIP TRANSPARENT



**Surface treatment:**  
OSMO oil

**Dimensions (mm):**  
13,5 x 195 x 2200

**Design:**  
without longitudinal phases,  
surface sanded, smooth





## TEAK 1-STRIP TRANSPARENT



**Surface treatment:**  
OSMO oil

**Dimensions (mm):**  
13,5 x 136 x 1820/2130

**Design:**  
without longitudinal phases,  
surface sanded, smooth







# **ACCESSORIES & TECHNICAL INFORMATION**



# FLOOR SKIRTING FOR ALL COLOUR SHADES

## TEMPERATE WOOD COLLECTION

### WITHOUT SURFACE TREATMENT



50 x 13 mm

OAK



35 x 5 mm

### WITH SURFACE TREATMENT

OAK TRANSPARENT



50 x 13 mm



35 x 5 mm

LIGHTLY SMOKED OAK



50 x 13 mm

OAK WHITE



50 x 13 mm

OAK NATUREL



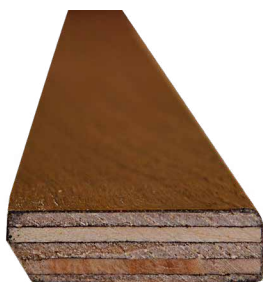
50 x 13 mm

OAK GRAPHITE



50 x 13 mm

OAK EBONY



50 x 13 mm

ASH



50 x 13 mm

AMERICAN WALNUT



50 x 13 mm



# FLOOR SKIRTING FOR ALL COLOUR SHADES

## EXOTIC WOOD COLLECTION

MERBAU

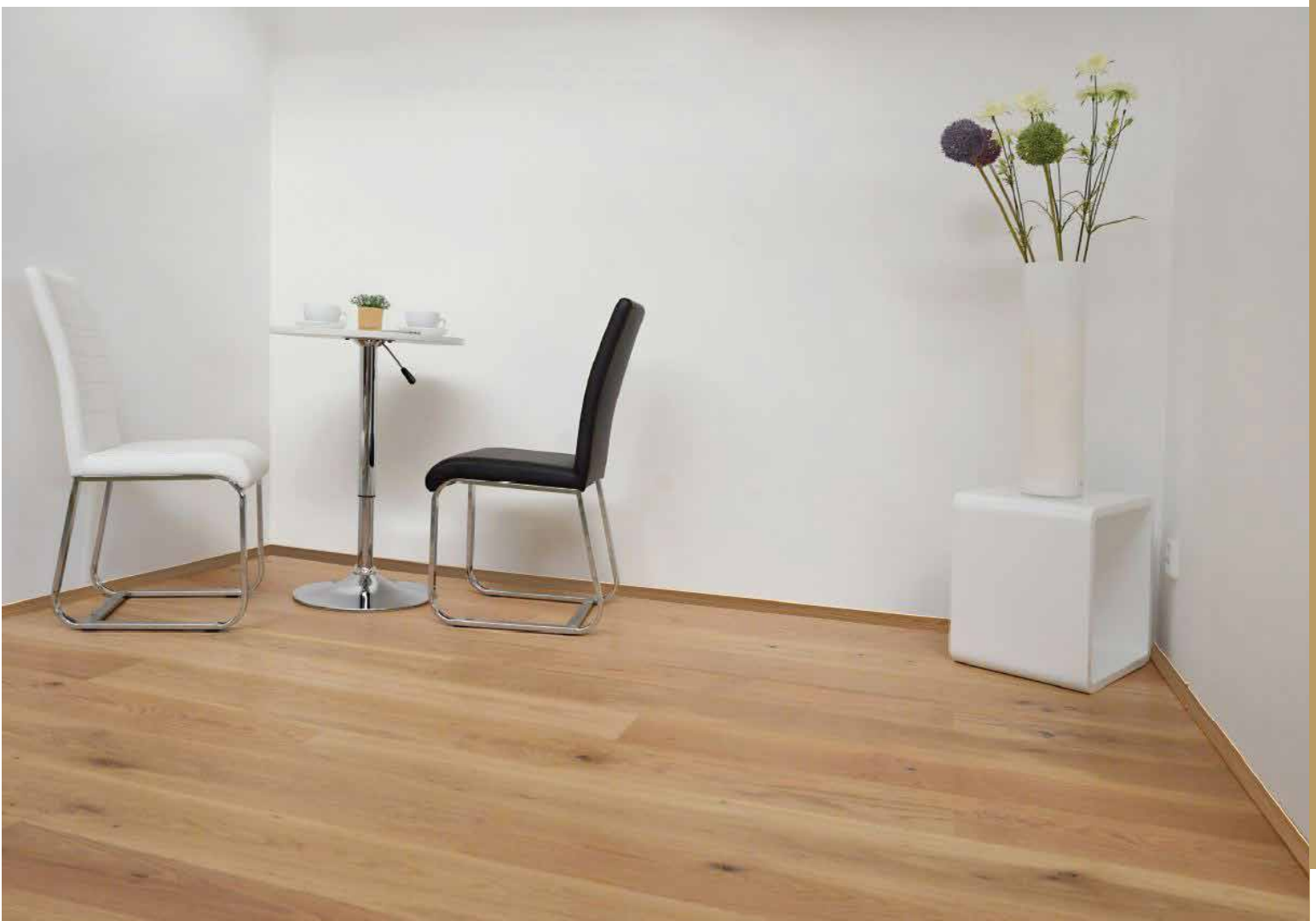


50 x 13 mm

TEAK



35 x 7 mm





# RECOMMENDED PROCEDURE FOR GLUING A MULTI-LAYERED WOODEN FLOOR DIRECTLY TO THE SCREED WITHOUT THE NEED FOR TROWELLING

## OPTION WITHOUT PENETRATION (FOR QUALITY CLEANED, SANDED SUBSTRATES)

1. installation of multi-layered wooden floors with BAKIT FPK adhesive, use a knife with the toothing according to the dimensions of the component directly on the substrate.



## OPTION WITH PENETRATION FOR COMPLICATED FOUNDATIONS

1. OKAMUL PU-V schnell polyurethane penetration is applied to the cleaned and sanded foundation in a thin layer, minimum drying time of 4 hours, maximum of 48 hours
2. Installation of multi-layered wooden flooring using BAKIT FPK adhesive, use a knife with the toothing according to the dimensions of the component. If it is necessary to level the heights using a self-levelling trowel, the OKAMUL PU-V schnell penetration must be recoated after approx. 60 minutes with OKATMOS EG 20 undiluted dispersion penetrant. This is followed by trowelling with a suitable self-levelling trowel and direct gluing of the multi-layered floor with BAKIT FPK adhesive.

Detailed information on the thinning, drying and consumption of each product can be found in the technical data sheet of each product. Check with the technician for the suitability of the composition for the specific covering and foundation.





# SYSTEM PRODUCTS FOR AN INSTALLATION OF WOODEN FLOORS

## PENETRATION:



### Okatmos EG 20

dispersion penetration for absorbent and non-absorbent substrates for self-leveling screeds and repair compounds, can be diluted to absorbent substrates



### Okamul PU-V schnell

polyurethane penetration for complicated foundations under adhesives BAKIT EK, BAKIT FPK, to be applied undiluted in a thin layer



### BAKIT PV Universal

dispersion penetration for absorbent foundations under self-leveling trowels or adhesives BAKIT EK, BAKIT FPK, applied undiluted

## FIXING AND REPAIRING SUBSTANCE:



### Servoplan Ki 300

Cement quick-drying repair substance for filling uneven screeds, repairs of stair edges and platforms, after mixing with OKAMUL RSG PLUS suitable as a binder for old and new wooden substrates as a preparation for installation of coated coverings

## SELF-LEVELLING CEMENT TROWEL FOR WOODEN FLOORS:



### Servoplan P 200 PLUS,

trowel compound for levelling under massive and multi-layer wooden floors and also for underfloor heating in screed, from 3 to 30 mm in one working step

## ADHESIVES FOR SOLID AND MULTI-LAYERED WOODEN FLOORS:



### BAKIT EK

elastic, odourless, one-component adhesive for gluing solid wooden floors or multi-layered floors, also for flooring heating or certain types of exotic wood species



### BAKIT FPK

elastic, odourless, one-component adhesive for gluing multi-layered wooden floors, also for underfloor heating



# Why **eKO** **WOOD**®?

1.

## OSMO oil and wax coating system (Ekowood flooring)



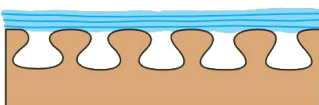
- protects wood from inside and outside
- the oil penetrates the wood and the wax forms a protective wax surface with open pores
- the wood can breathe
- it can be renovated locally
- does not crack, does not peel off, resistant to liquids, easy to maintain

## Traditional oil-based coating system



- protects the wood from the inside
- does not form a film
- does not form any protective surface, difficult to maintain
- poor durability

## Water-based varnishes and coating systems



- protects the wood only from the outside
- forms a film on the surface of the wood
- renovation is only possible after sanding the surface
- the paint cracks and peels off over time

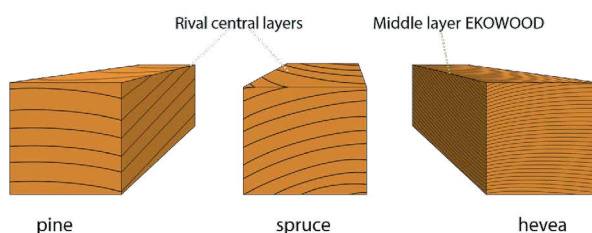
2.

## HEVEA central layer

The central load-bearing layer of the floor is made of **HEVEA wood = the best solution**

### Why?

Wood cutting of the most used wood species for the production of the central layer and their differences:



	spruce	pine	hevea	oak
Density kg/m <sup>3</sup>	385	450	600	673
Brinell's hardness	1,2	1,9	3,5	3,7
Wood dilation in %				
Radially %	3,6	4,0	0,8	4,0
Tangentially %	7,8	7,7	1,2	7,5
Longitudinally %	0,5	0,5	0,5	0,5

A core with HEVEA, stable in all directions = **the best solution**





### 3. Modern technology 5G lock system

**5G**  
Bristle Tongue



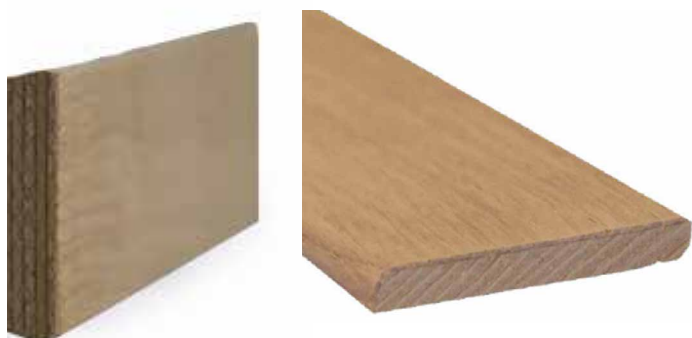
Extremely fast, reliable and clean installation

### 4. Design / Grading

- Surface finely brushed
- Slightly shrunken longitudinal and transverse sides, 4V
- Longitudinal and transverse joints protected with wax emulsion
- Suitable for underfloor heating as recommended
- Dimensions of boards: 13.5 x 192 mm, 13.5 x 195 mm, 13.5 x 136 mm
- Lengths of boards: 1820/2150 mm depending on availability
- Each package contains 6 rows of boards of which 2 rows are composed of shorter lengths
- RUSTICAL, CLASSIC and UNICA grading according to the pattern options

### 5. Original skirtings in the shade of the floor

Dimensions:  
13x50x2400 mm  
5x35x2500 mm



### 6. EKOWOOD floor finishing Osmo Polyx oil

Surface based on natural oils and waxes, that keeps the wood perfectly protected and natural!



**osmo**®  
...ve tvaru a barvě

You only need 2 products for maintenance:



Ordinary  
maintenance



Intensive cleansing and  
revitalisation

# EKOWOOD IN COMPARISM TO COMMONLY AVAILABLE WOODEN FLOORS WITH OILED SURFACE FINISH

## BE THE JUDGE OF THE DIFFERENCES:

Tests conducted by AU-MEX on three-layered wooden floors in order to allow readers to compare Ekowood floors with competing oiled floors available in the trade network.

**PIC. 1**



The result of 2 hours of direct water exposure on a competing wood floor with an oiled surface.

**PIC. 2**

The result of 2 hours of direct water exposure on EKOWOOD floor with Osmo Polyx oil.



**PIC. 3**



The result of 12 hours of exposure to the shoe polish on a wooden floor with an oiled surface.

**PIC. 4**



The result of 12 hours of exposure to the shoe polish on the EKOWOOD floor with Osmo Polyx oil - the wax protection does not let the polish sink in. It can be simply wiped off.

**PIC. 5**

Comparism of both types of floors after 12 hours of exposure to shoe polish



a) oiled floor  
b) EKOWOOD oil-waxed flooring



## PIC. 6



Cleaning of dirty oiled floors after 12 hours using the professional maintenance product OSMO Wisch Fix. The impurities remained inside the pores of the wood and can be removed only by mechanical intervention (sanding).

## PIC. 7



Cleaning dirty EKOWOOD floor after 12 hours with the professional maintenance product OSMO Wisch Fix. The maintenance product did its job and the appearance of the wood surface is perfect once again.

## PIC. 8



Oiled floor vs. EKOWOOD floor with Osmo Polyx oil finish. Compare result side by side.

## PIC. 9



The result of the alcohol marker on oiled wooden floors.

## PIC. 10



The result of the alcohol marker on EKOWOOD wood flooring with Osmo Polyx oil.

## PIC. 11

Result and comparism of both types of floors after cleaning them with professional maintenance product OSMO Wisch Fix and OSMO Wax Maintenance and Cleaner.

- a) oiled floor - the pollution remained inside the pores of the wood and can only be removed by mechanical intervention (sanding).
- b) EKOWOOD oil-waxed floor - the maintenance products have done their job and the appearance of the surface of the wood is perfect once again.



## 10 GOLDEN RULES

1. it is essential that the floor installer or user does the installation according to EKOWOOD's installation and maintenance instructions, in particular that all boards are checked for visible defects before installation
2. the user should take into account that despite the output grading control, the manufacturer cannot exclude small variations in grading of up to 5% of the total quantity towards a lower or higher grading
3. therefore, if the deviation in grading is not more than 5% of the delivered quantity, this 5% deviation cannot be a reason of complaint.
4. deviations in colour and texture cannot be ruled out when purchasing. Wood is a natural product with specific characteristics, which often has a very inconsistent character and properties.
5. in order to preserve its beauty, we recommend placing a quality mat in front of and behind the entrances to prevent scratches.
6. how often the floor should be mopped depends on its intensity of use. In private areas, a weekly rhythm is usually sufficient; in restaurants and other high-traffic areas, a daily wet mopping rhythm is recommended.
7. Wipe with a moderately wet mop. Mop dry afterwards.
8. do not use common dishwashing liquids, hot water, abrasive pastes or harsh chemicals.
9. dust, lint or pet hair can be removed with a vacuum cleaner or broom
10. wooden floors should be refreshed from time to time with suitable products, in the households this is usually after a few months depending on the intensity of use





**„One product combining all the benefits“**

**You've read it, you've seen it,  
now check it out for yourself !**

# eKO WOOD®

*A stylish way to live...*

First distributor:

Your regional retailer:



AU-MEX Ltd.  
Podebradska 574/40  
190 00 Prague 9 - Vysocany  
Phone: 00420283933452  
Email: [info@au-mex.cz](mailto:info@au-mex.cz), [export@au-mex.com](mailto:export@au-mex.com)  
[www.au-mex.com](http://www.au-mex.com)



© 2023 - Subject to technical changes and delivery conditions. Dimension and colour data of images without guarantee. Despite extensive checking of the contents of this catalogue, we cannot completely rule out printing errors. The colour scheme is non-binding. Obvious product defects must be reported before use. Late complaints will be disregarded. We reserve the right to make changes in the interest of product innovation.